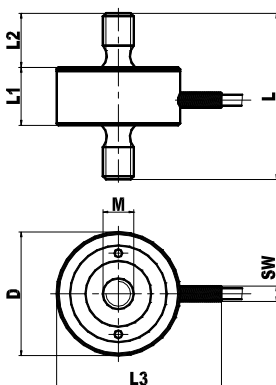


Special features

- For general purpose
- Strain gauge measuring system
- Tension/Compression
- Small dimensions



Outline Dimensions



Rated Capacities kN	D mm	M mm	L mm	L1 mm	L2 mm	L3 mm	SW
0,05	18	M4	24	10	7	24	3
0,1; 0,2; 0,5	28	M6	34	14	10	38	4
1; 2; 5	32	M8	43	15	14	42	4

Specifications

Accuracy class	1	0.5	
Rated Capacities	50 N	100, 200, 500 N	1, 2, 5 kN
Safe Overload	150 %F.S.		
Ultimate Overload	200 %F.S.		
Rated Output (mV/V ± 2%)	1.0	1.5	
Zero balance	± 2 % F.S.		
Non-linearity (%F.S.)	0.5	0.25	
Hysteresis (%F.S.)	0.5	0.25	
Creep 30 min (%F.S.)	0.2	0.1	
Temperature Effect	0.1 %F.S./10 °C		
- On Zero	0.1 %F.S./10 °C		
- On Output	0.1 %F.S./10 °C		
Input Impedance	395Ω ± 10%	380Ω ± 10%	
Output Impedance	350Ω ± 5%		
Insulation Impedance	> 5000 MΩ		
Excitation	5 V		
- Recommended	10 V		
- Maximum	7 V		
- Maximum	15 V		
Temperature range	0 ... + 50 °C		
- Compensated	- 10 ... + 70 °C		
- Operating	- 10 ... + 70 °C		
Protection	IP54		
Deflection at max load	0.1 mm		
Construction	Aluminium	Steel	
Cable	LifYDY 4 x 0.05, 2 m		

Wiring diagram

